



INTEGRA REALTY RESOURCES

IRR | ORLANDO

COMMERCIAL REAL ESTATE
VALUATION & CONSULTING



19

years serving Central Florida
markets

IRR[®]—*INTEGRA REALTY RESOURCES*—

provides world-class commercial real estate valuation and counseling services to both local and national top financial institutions, developers, corporations, law firms, and government agencies. As one of the largest independent property valuation and counseling firms in the United States, we provide our diverse array of clients the highly informed opinions and trusted expert advice needed to understand the value, use and feasibility of their real estate. *IRR. Local expertise. Nationally.*

1300

appraisals completed
annually

RECENT APPRAISAL ASSIGNMENTS OF NOTABLE AND VARIED ASSETS

Office



- **1560 North Orange Office Plaza – Winter Park - 17,310 SF**
- EBG Office Park – 5551 Vanguard St, Orlando - 44,736 SF
- 2 South Orange Avenue – Orlando - A 6-Story Office Building - 124,019 SF
- University Corporate Center II – 11486 Corporate Blvd, Orlando - 5,500 SF
- Satcom Direct Headquarters – 1050 Satcom Lane, Melbourne - 61,819 SF

Industrial



- **AA Metals Building – 11616 Landstar Blvd – 194,038 SF**
- Winter Garden Business Park - Business Park Consisting of 8 Buildings - 91,586 SF
- Proposed Distribution Warehouse - South Orange I & II Orlando - 280,960 SF
- Kratos Defense & Security Solutions – 8601 Transport Dr, Orlando - 142,536 SF
- Parkline Industrial Flex Facility – Orlando - 81,750 SF
- Proposed Amazon Delivery Station – 2050 Shelby Industrial Dr, Apopka - 202,044 SF
- Furniture Distribution Center - 7100 Haverty's Way, Lakeland - 335,202 SF

Multifamily



- **Maitland City Centre, Class A Mixed-Use Multifamily & Retail Space Development**
- Novell Nona Proposed - Class A Multifamily – 11855 Narcoossee Rd, Orlando - 260 Units
- West University Avenue Student Housing – 1642 W. University Ave, Gainesville - 604 Beds
- Moderna Central – 125 E Pine St, Orlando - 350 Units
- Sole at Brandon – Class A Multifamily Mid-Rise, 9303 Cobalt Dr, Riverview - 366 Units

Hospitality



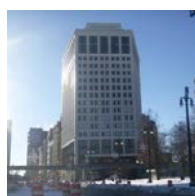
- **Marriott Residence Inn Convention Center, Orlando, 132,618 SF - 124 Rooms**
- Spring Hill Suites, Orlando - 100,719 SF - 167 Rooms
- Holiday Inn - 5750 TG Lee Blvd, Orlando, 158,110 SF - 290 Rooms
- Four Points by Sheraton - 5905 International Dr, 152,565 SF - 303 Rooms
- Cocoa Key Hotel & Water Resort - 7400 International Dr, Orlando - 221,193 SF

Shopping Centers



- **Wekiva Riverwalk – 2101-2289 E. Semoran Blvd, Apopka, 248,659 SF**
- Plaza ECCO - 3107 S. Orange Avenue, Orlando - 57,747 SF
- Citi Centre - 410-470 Citi Centre Street, Winter Haven - 185,705 SF
- Sunset Walk at Margaritaville - Margaritaville Boulevard, Kissimmee - 192,659 SF
- Kirkman Oaks - 4550 S Kirkman Rd, Orlando - 98,902 SF

Specialty Assignments



- **Bronson Parcels LLP – Kissimmee, Kenansville & Saint Cloud - 22,242 Acres**
- Tesoro Golf Club, Port Saint Lucie, Litigation Valuation
- Xentury City / World Gateway – 343.33 Acres
- Sola at Celebration, Complex Litigations Services – 14.41 Acres
- Westgate Resorts / River Ranch – Flowage Easement - 1,415 acres
- Orlando Health Jewett Orthopedic Hospital – 111,960 SF

RECENT APPRAISAL ASSIGNMENTS OF NOTABLE AND VARIED ASSETS (Continued)

Religious Facilities



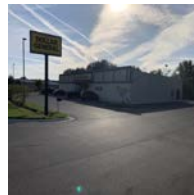
- **St. George Coptic Church - 410 N Halifax Ave, Daytona Beach - 27,195 SF**
- Gurdwara Nanaksar Florida - 2480 N. Hoagland Blvd - 19,486 SF
- Shiloh Baptist Church - 604 W Jackson St, Orlando - 37,869 SF
- King Jesus International Ministry of Orlando - 5235 Hoffner Ave, Orlando - 14,661 SF
- Catalyst Community Church - 14500 Landstar Blvd, Orlando - 7,189 SF

Government



- **George C. Young Federal Building & Courthouse, Orlando - 208,647 SF - FAR for GSA**
- US Federal Court House Annex, Orlando 321,737.36 SF - FAR for the GSA
- Sam M. Gibbons US Courthouse, Tampa, 237,132.94 SF - FAR for the GSA
- Bryan Simpson US Courthouse, Jacksonville, 310,054.20 SF - FAR for the GSA
- Paul G. Rogers Federal Building & Courthouse, West Palm Beach - 53,930.04 SF - FAR for the GSA

Net Lease Retail



- **Dollar General - 3602 Cypress Gardens Road, Winter Haven - 9,100 SF**
- Surterra Wellness Orlando - Medical Marijuana Dispensary - 6,872 SF
- Bank Branch Oviedo - 11 Alafaya Woods Boulevard - 5,357 SF
- Sweet Water Car Wash - 7656 Majorca Place, Orlando - 11,620 SF
- CVS - 5190 Conway Road, Orlando - 13,824 SF
- Dunkin' Donuts / Subway - 2365 SR 44, New Smyrna Beach - 3,360 SF

OUR VALUE PROPOSITION

What sets our firm apart is the longevity of our principals and senior analysts who have been collaborating on property analyses for over 25 years. Through developing our team relationships, our specialty appraisal practices have evolved to create high quality, industry-leading standards. Over this 25+ year relationship, our staff has evolved into specialty appraisal practices. One staff member appraises apartments, another large shopping centers, another office buildings, another industrial buildings; we even have a staff member that appraises churches.



Christopher D. Starkey, MAI, SGA Senior Managing Director

Chris is the Senior Managing Director of the Orlando Office and has been providing a wide variety of appraisal services since 2002. During this time, he has provided appraisal services involving properties ranging from regional malls to larger agricultural properties throughout the State of Florida. Mr. Starkey specializes in income producing properties including large retail, office, industrial and multifamily developments, among others. Mr. Starkey is a State-Certified General Real Estate Appraiser (RZ 2886) and a member of the Appraisal Institute.



Randall L. Rex, MAI, Managing Director

Mr. Rex is a Florida State-Certified General Appraiser with Integra Realty Resources - Orlando. Mr. Rex has been actively engaged in all areas of real estate valuation, brokerage, consulting and development since 1981 and has performed appraisals for buyers, sellers, attorneys, financial institutions and insurance companies. Mr. Rex is a State-Certified General Real Estate Appraiser (RZ 815) and a member of the Appraisal Institute.



Michael B. Politano, MAI, Director

Mr. Politano is a Florida State-Certified General Real Estate Appraiser and Director with Integra Realty Resources - Orlando, a full-service regional valuation and consulting firm located in Orlando, Florida. Mr. Politano has been actively engaged in real estate valuation and consulting assignments since 2007. Mr. Politano has performed appraisals for buyers, sellers, attorneys, financial institutions, and insurance companies.



OUR CLIENTS

Bank & Financial Institutions

Addition Financial Credit Union
 Alabama Credit Union
 Ally Bank
 Ameris Bank
 Apex Mortgage
 Apollo Bank
 Atlantic Union Bank
 Axiom Bank
 Banc of California
 BancorpSouth Bank
 Banesco USA
 Bank of America
 Bank of Central Florida
 Bank OZK
 BankFinancial
 BankFlorida
 BankUnited
 BBVA USA
 BMO Bank
 Business First Bank
 Business Loan Capital, Inc.
 Cadence Bank, NA
 Celtic Bank
 Centennial Bank
 CenterState Bank aka South State Bank
 Chemical Bank
 Citibank, NA
 Citigroup Global Markets
 Citizens Bank
 City National Bank
 Cogent Bank
 Comerica
 CommercialOne
 Commercial Bank of California
 Community Financial
 Crowder Financial
 Denmark State Bank
 Dominion Financial Services, LLC
 Drummond Community Bank
 Emigrant Bank
 Evangelical Christian Credit Union (ECCU)
 F&M Bank and Trust Company
 Farm Credit of Florida
 Farmers Business Network, Inc.
 Farmers State Bank
 Fifth Third Bank
 First Advantage Bank
 First American Bank
 First Bank

First Citizens Bank & Trust Company
 First Citizens National Bank
 First Federal Bank
 First Financial Bank
 First Horizon Bank
 First Housing
 First Merchants Bank
 First National Bank
 First National Bank of Omaha
 First National Bank of Pasco
 First National Bank of South Miami
 First Savings Bank
 First-Citizens Bank & Trust Company
 Florida First Capital Finance Corporation
 Focus Valuation Advisors
 Fourshore Capital, LLC
 Franklin Synergy Bank
 Frost Bank
 Grandbridge Real Estate Capital LLC
 Hancock Bank
 Iberia Bank
 Illinois Bank & Trust
 Intercredit Bank, N.A.
 INTRUST Bank
 Johnson Financial Group
 JPMorgan Chase Bank, N.A.
 KeyBank National Association
 Legacy Bank of Florida
 LV Lending, LLC
 M&T Bank
 Mesa Capital, LLC
 National Christian Foundation
 National Cooperative Bank
 One Florida Bank
 Origin Bank
 Pinehurst Capital, LLC
 Pinnacle Bank
 PNC Bank
 Real Estate Matrix
 Real Estate Underwriting Services
 Renasant Bank
 Resource Capital Group, LLC
 Ryan Companies USA
 Safe Harbor Equity
 Santander Bank, N.A.
 Seacoast National Bank
 Seaside National Bank & Trust

ServisFirst Bank
 SmartBank
 Sunrise Bank
 SunState Bank
 Synovus Bank
 TD Bank, N.A.
 TerraCap Management, LLC
 Texas Capital Bank
 The Northern Trust Company
 Thrivent Federal Credit Union
 TIAA - Nuveen
 TIAA Bank
 Truist Bank
 Trustmark National Bank
 Umpqua Bank
 United Community Bank
 US Bank
 Valley National Bank
 Vantage Bank
 Veritex Bank
 Wells Fargo Bank RETECHS
 Wells Fargo Private Bank
 Winter Park National Bank



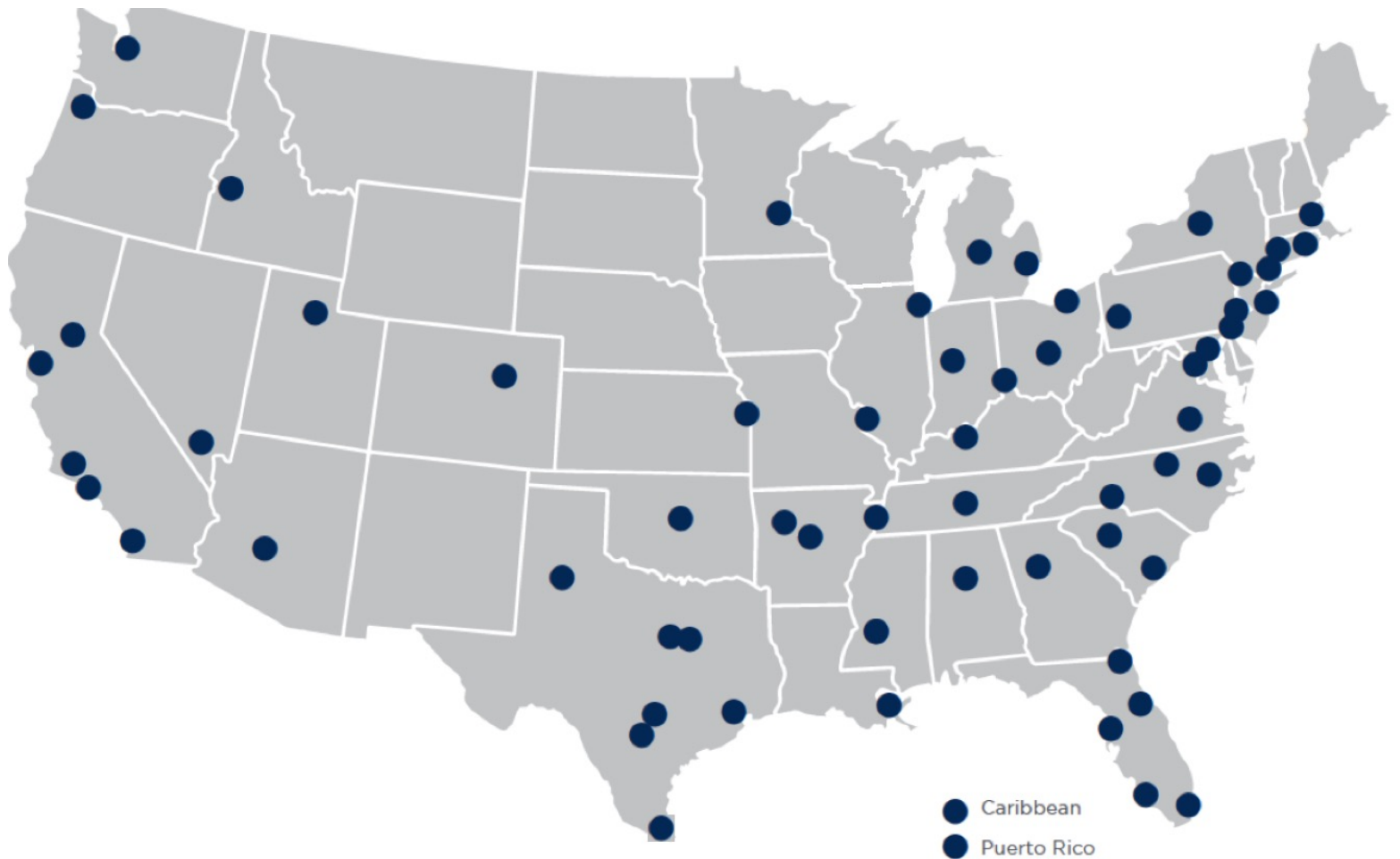
LOCAL EXPERTISE. NATIONALLY.

50+

local offices

60+

markets covered U.S. and Caribbean



NORTHEAST OFFICES

CONNECTICUT

Hartford, CT
Todd Isaacson, MAI
T (860) 291-8997 ext. 19
tisaacson@irr.com

NEW JERSEY

Coastal New Jersey
Halvor J. Egeland, MAI
T (732) 244-7000 ext. 103
hegeland@irr.com

Northern New Jersey
Paul T. Beisser, CRE, MAI, SCGRE
T (973) 422-9800
pbeisser@irr.com

NEW YORK

Syracuse, NY
William J. Kimball, MAI, FRICS
T (315) 422-5577
wkimball@irr.com

PENNSYLVANIA

Philadelphia, PA
Raja P. Waran, MAI
T (908) 420-9797
rwaran@irr.com

Pittsburgh, PA
Brian Kelly, MAI, SRA
T (412) 683-2211
bkelly@irr.com

RHODE ISLAND

Providence, RI
Todd Isaacson, MAI
T (860) 291-8997 ext. 19
tisaacson@irr.com

SOUTHEAST OFFICES

ALABAMA

Birmingham, AL
Rusty Rich, MAI, MRICS
T (205) 949-5995
r-rich@irr.com

ARKANSAS

Little Rock, AR
Michelle Alexander, MAI, MRICS
T (901) 322-1703
malexander@irr.com

FLORIDA

Miami | Caribbean
James Andrews, MAI, CRE, FRICS, ASA/BV
T (305) 670-0001 ext. 320
jandrews@irr.com

Orlando, FL
Christopher D. Starkey, MAI
T (407) 843-3377 ext. 112
cstarkey@irr.com

Southwest Florida
Carlton J. Lloyd, MAI
T (239) 687-5801
clloyd@irr.com

Tampa, FL
Kendra Stevens Barry
T (813) 287-1000 ext. 110
kbarry@irr.com

GEORGIA

Atlanta, GA
Matthew Albigese, MAI
T (404) 418-4358 ext. 1000
malbigese@irr.com

LOUISIANA

New Orleans, LA
John R. Praytor, MAI
T (601) 714-1665
jpraytor@irr.com

MISSISSIPPI

Jackson, MS
John R. Praytor, MAI
T (601) 714-1665
jpraytor@irr.com

NORTH CAROLINA

Charlotte, NC
John D. Scott, Jr., MAI, MRICS
T (704) 206-8258
jscott@irr.com

Greensboro, NC
Nancy B. Tritt, MAI, SRA, FRICS
T (336) 676-6033
ntritt@irr.com

Raleigh, NC
Chris R. Morris, MAI, FRICS
T (919) 847-1717
cmorris@irr.com

SOUTH CAROLINA

Charleston, SC
Cleveland "Bud" Wright, Jr., MAI
T (843) 718-2125 ext. 10
cwright@irr.com

Columbia, SC
Michael B. Dodds, MAI, CCIM
T (803) 772-8282 ext. 110
mdodds@irr.com

TENNESSEE

Memphis, TN
Michelle Alexander, MAI, MRICS
T (901) 322-1703
malexander@irr.com

Nashville, TN
Paul Perutelli, MAI, SRA, FRICS
T (615) 628-8275 ext. 1
pperutelli@irr.com

VIRGINIA

Richmond, VA
Kenneth L. Brown, MAI, FRICS, CCIM
T (804) 346-2600 ext. 209
kbrown@irr.com

CENTRAL OFFICES

ILLINOIS

Chicago, IL
Ron DeVries, MAI, FRICS
T (312) 565-3432
rdevries@irr.com

INDIANA

Indianapolis, IN
Michael Lady, MAI, SRA, ASA, CCIM, FRICS
T (317) 546-4720
mlady@irr.com

KENTUCKY

Louisville, KY
Stacey S. Nicholas, MAI, MRICS
T (502) 452-1543 ext. 3774
snicholas@irr.com

MICHIGAN

Detroit, MI
Donald L. Selvidge, MAI
T (248) 540-0040 ext. 114
dselvidge@irr.com

Grand Rapids, MI
Jeff Genzink, MAI
T (616) 261-5000
jgenzink@irr.com

MINNESOTA

Minneapolis/St. Paul, MN
Michael Amundson, MAI, CCIM
T (952) 905-2401
mamundson@irr.com

MISSOURI

Kansas City, MO
Brock A. Heyde, MAI
T (816) 652-0222
bheyde@irr.com

St. Louis, MO
Timothy M. Schoemehl, MAI
T (636) 898-6533
tschoemehl@irr.com

OHIO

Cincinnati/Dayton, OH
Gary S. Wright, MAI, FRICS, SRA
T (513) 426-7125
gwright@irr.com

Cleveland, OH
Douglas P. Sloan, MAI
T (330) 659-3640 ext. 101
dsloan@irr.com

Columbus, OH
Brad A. Johnson, MAI
T (614) 398-4307
bajohnson@irr.com

SOUTHWEST OFFICES

ARIZONA

Phoenix, AZ
Walter "Tres" Winium, III, MAI, FRICS
T (602) 266-5599
twinium@irr.com

OKLAHOMA

Oklahoma City, OK
Richard Cole, Jr., MAI
T (405) 422-0718 ext. 2
richard.cole@irr.com

TEXAS

Austin, TX
Todd Rotholz, MAI
T (713) 973-0212 ext. 12
trotholz@irr.com

Dallas, TX
Jimmy H. Jackson, MAI
T (972) 725-7724
jhjackson@irr.com

Ft. Worth, TX
Alan Pursley, MAI, SRPA, SRA, SGA
T (817) 763-8023
apursley@irr.com

Houston, TX
Todd Rotholz, MAI
T (713) 973-0212 ext. 12
trotholz@irr.com

Lubbock, TX
Taylor Carmona
T (409) 656-5199
taylor.carmona@irr.com

San Antonio, TX
Brandon Brehm, MAI, CCIM
T (210) 446-4444
bbrehm@irr.com

WEST OFFICES

CALIFORNIA

Los Angeles, CA
John G. Ellis, MAI, CRE, FRICS
T (818) 290-5444
jellis@irr.com

Orange County
J. Richard Donahue, MAI
T (714) 665-6515
rdonahue@irr.com

Sacramento, CA
Kevin Ziegenmeyer, MAI
T (916) 435-3883 ext. 224
kziegenmeyer@irr.com

San Diego, CA
John A. Morgan, MAI
T (858) 259-4900 ext. 315
jmorgan@irr.com

San Francisco, CA
Jeffrey Fillmore, MAI
T (408) 299-0444
jfillmore@irr.com

COLORADO

Denver, CO
Larry B. Close, MAI
T (720) 833-5931
lclose@irr.com

IDAHO

Boise, ID
Bradford Knipe, MAI, ARA, CRE, CCIM, FRICS
T (208) 472-3200
bknipe@irr.com

NEVADA

Las Vegas, NV
Charles E. Jack, IV, MAI
T (702) 906-0480
cjack@irr.com

UTAH

Salt Lake City, UT
John T. Blanck, MAI, MRICS
T (801) 263-9700 ext. 109
jblank@irr.com

WASHINGTON

Seattle, WA
Matthew A. Bacon, MAI
T (206) 436-1179
mbacon@irr.com

CARIBBEAN

Caribbean
James Andrews, MAI, CRE, FRICS, ASA/BV
T (844) 952-7604 ext. 402
jandrews@irr.com

Puerto Rico
Carlos Vélez, MAI, SRA, BCA, CMEA, CCIM, MRICS
T (787) 782-4974
cvelez@irr.com

INTEGRA REALTY RESOURCES - ORLANDO

326 North Magnolia Avenue
Orlando, Florida 32801
T: (248) 540-540-0040
F: (248) 540-8239
irr.com/Orlando

Christopher D. Starkey, MAI, SGA
Senior Managing Director
T (248) 979-9670
cstarkey@irr.com

Randal L. Rex, MAI
Managing Director
T (248) 540-0040 x 107
rrex@irr.com

Michael B. Politano, MAI
Director
T (407) 843-3377 X 145
mpolitano@irr.com

irr.com

Visit us online to learn more
and access our extensive
research library.



INTEGRA REALTY RESOURCES
Local Expertise. Nationally.